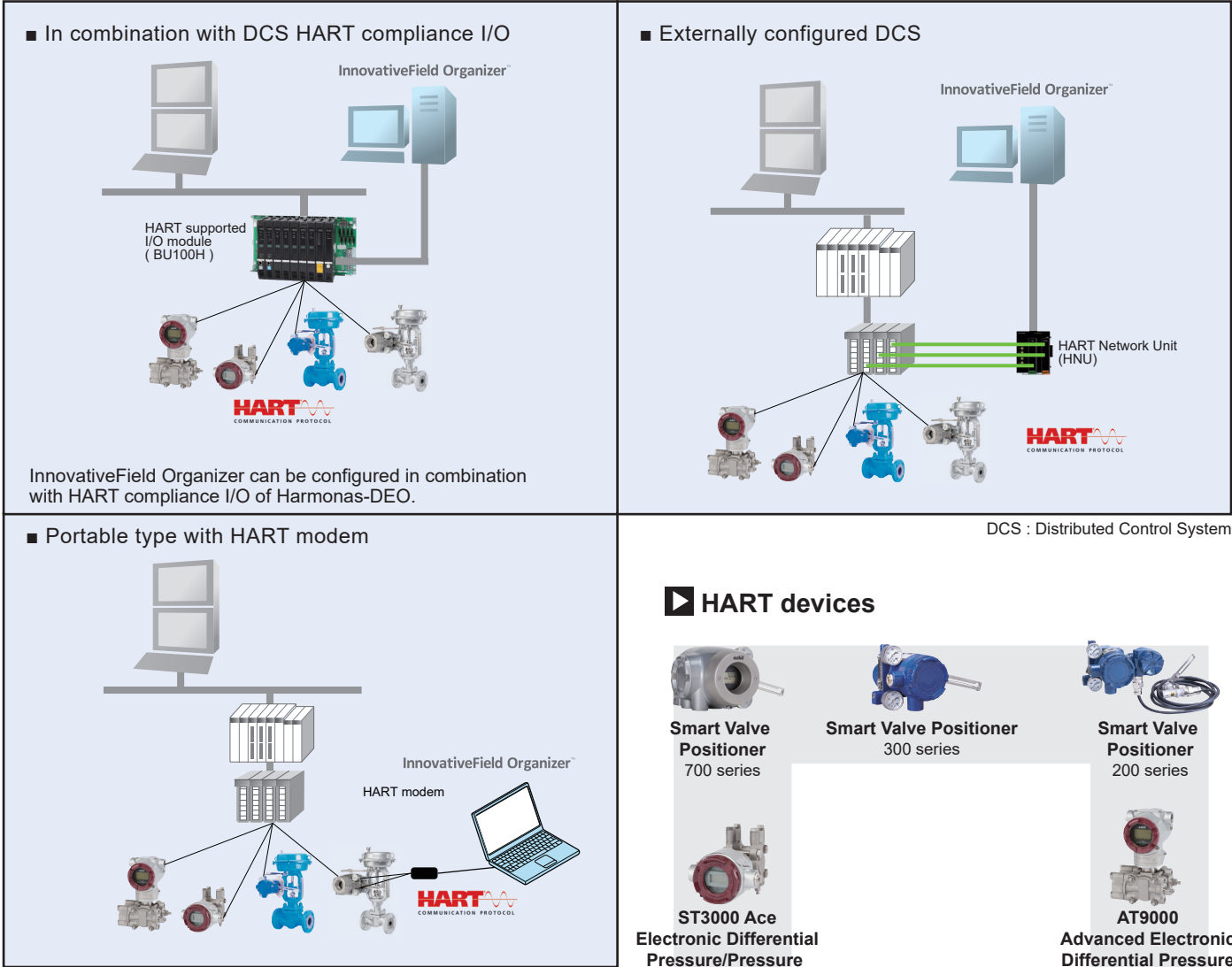
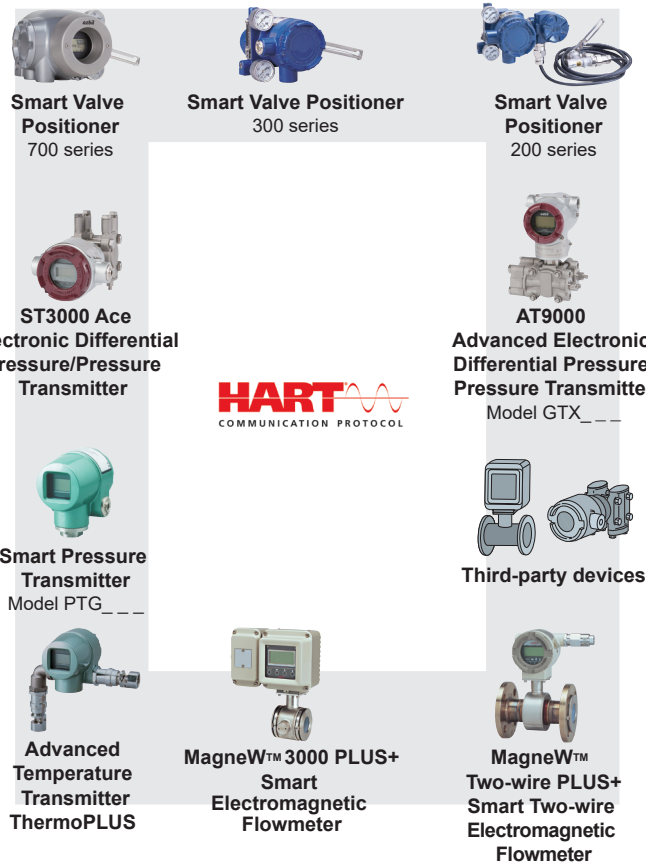


▶ System configuration



▶ HART devices



Please read "Terms and Conditions" from the following URL before ordering and use.
<https://www.azbil.com/products/factory/order.html>

- InnovativeField Organizer, Harmonas-DEO, Alphaplus and MagneW are trademarks of Azbil Corporation in Japan.
- HART is a registered trademark of HART Communication Foundation.
- Other product names, model nos., and company names may be trademarks of the respective company.

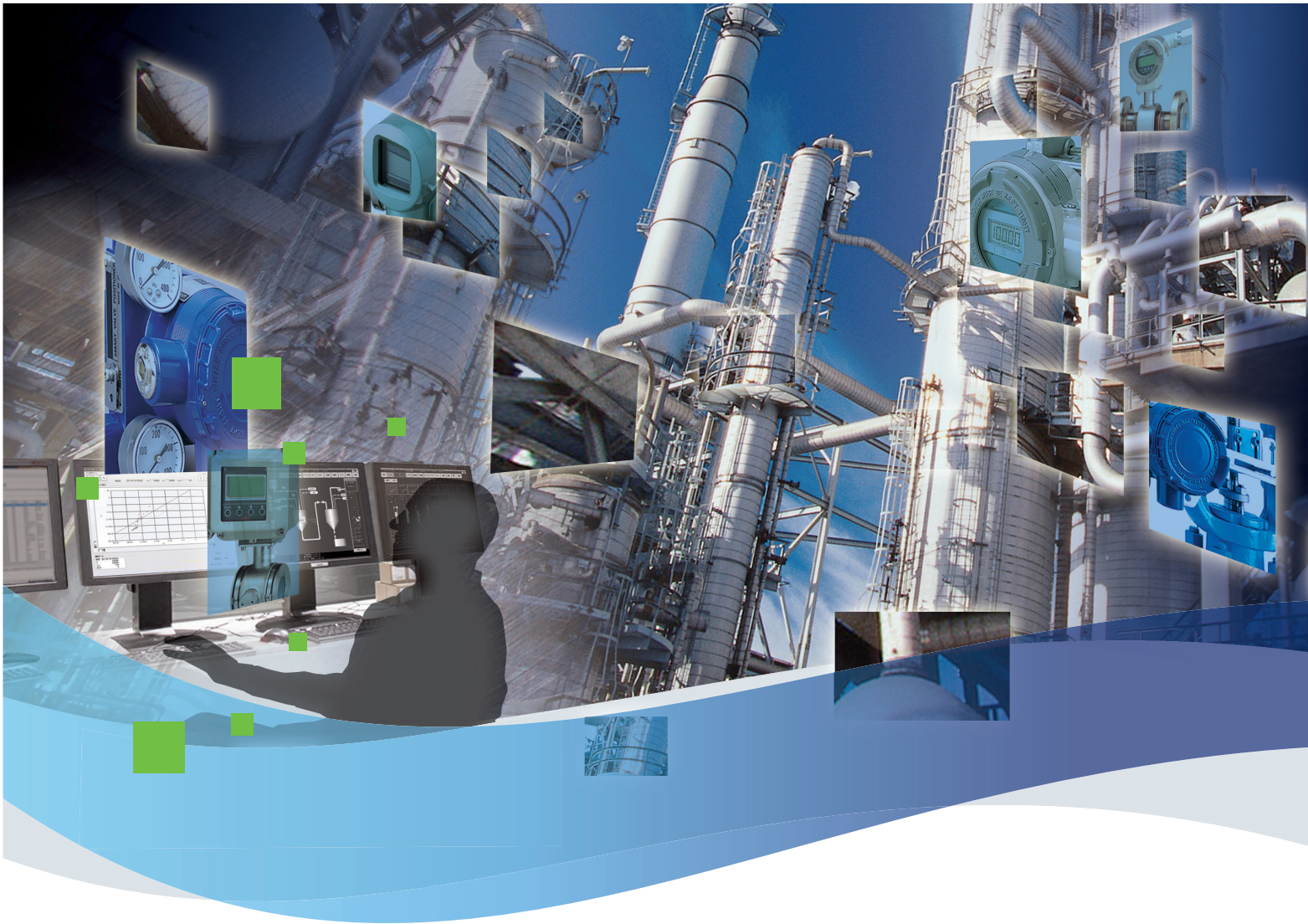
[Notice] Specifications are subject to change without notice.
No part of this publication may be reproduced or duplicated without the prior written permission of Azbil Corporation.

Azbil Corporation
Advanced Automation Company

1-12-2 Kawana, Fujisawa
Kanagawa 251-8522 Japan
URL: <https://www.azbil.com>

1st Edition : May. 2011-JBA
5th Edition : Nov. 2023-AZ

azbil



Device Management System
InnovativeField Organizer™
For top performance from field devices

Optimizes instrumentation maintenance work by device management following the maintenance workflow.

By digital communication with field devices, instead of conventional 4–20 mA signals, InnovativeField Organizer™ makes maximum use of diagnostic and maintenance information provided by devices, improve efficiency of field and plant operation.

Execution of loop checks or control valve step response tests

Conventional method

One operator in the control room and several field personnel conduct checks for several days.

With InnovativeField Organizer...

Start a loop check or control valve step test before going home, and the results will be waiting at the office the next morning.

Dramatically reduce the required man hours for loop check before start-up

Dramatically improve loop check performance

In a single step, check site devices to see if they are alive and connected.

Spot an offline device at a glance.

Check 150 devices in 3 seconds.

3-point check for 100 loops (100 transmitters)

Conventional method

Requires 2 persons (1 pair) for at least 3 days.

Done in 2 hours.

Reduce the man hours more than 90%.

Step response test for 200 control valves

Conventional method

Requires 2 persons for 7 days.

Done in 2 hours.

Lists the control valves to be checked.

Conventional method

Maintenance schedules are based on time, so valve is checked regardless of deterioration level.

With InnovativeField Organizer...

Valves to be tested are listed by level of deterioration, as determined by recorded diagnostic parameters during operation that indicate clogging, seizure, or leakage, or by step test executed after shutdown.

Optimization of valve overhaul during T/A

Checks in this section are optimized by maintenance based on valve condition.

Repair or part replacement: 42%

Overhaul only: 58%

Breakdown of control valve maintenance undertaken by Azbil Corporation.

Control valves which are estimated to be poor condition are listed by using recorded CV diagnosis parameters during plant operation.



Avoid unplanned downtime caused by field device

Early detection of field device abnormality during plant operation

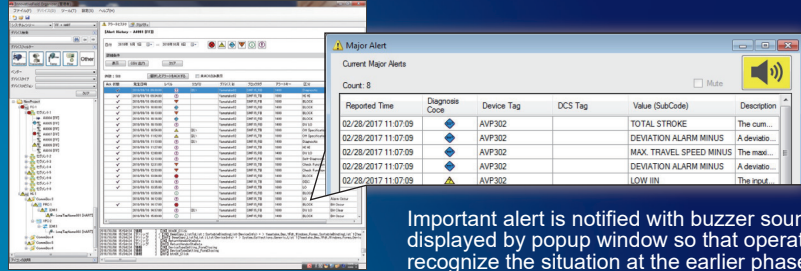
Conventional method

Work site patrol to check whether instrument readings differ dramatically from the previous day's

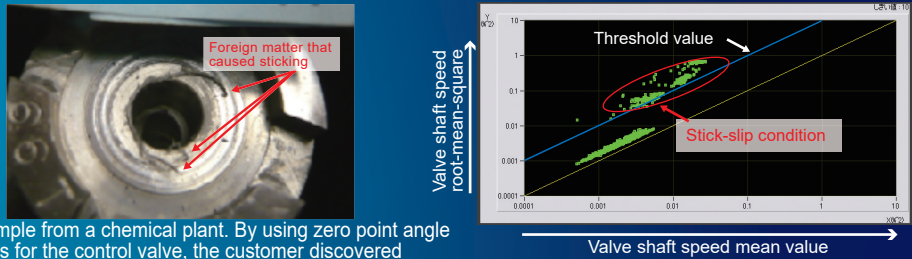
With InnovativeField Organizer...

Upon arrival in the morning, check the screen for device abnormality or messages about required maintenance. If there is any problem, check the details screen and take countermeasures before a malfunction occurs.

InnovativeField Organizer, not the maintenance staff, monitors devices 24 hours a day, 365 days a year. InnovativeField Organizer monitors how field devices are operating. If any abnormality is detected, it alerts maintenance staff and operators so that they can take prompt action.



Control valve online monitoring. By monitoring control valves online using the diagnostic functions of Azbil Corporation's Smart Valve Positioner, plant troubles that are caused by control valve problems may be lessened through early detection.



Advanced Device Diagnosis other than Control Valve. AT9000 Advanced Electronic Differential Pressure / Pressure Transmitter Model GTX. Impulse-line clogging diagnostics.

Tools to check the detail of field device which is in poor condition. About the poor condition valves, confirm the detail information by using Alert Detail Display and/or another tools, and judge whether shall be taken action. Alert Detail Display describes the alert meaning. If can identify the cause of the alert, the window also describes how to deal.

