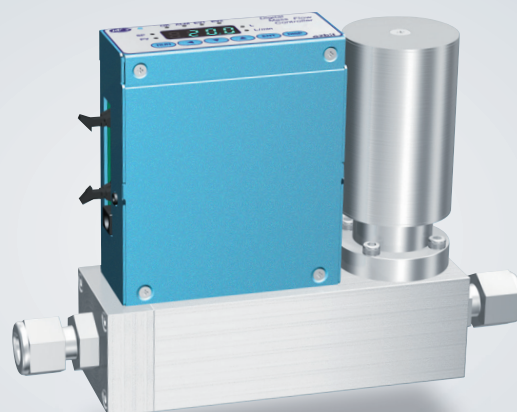


FOUP nitrogen purge flow control

Helping to reduce adjustment work!

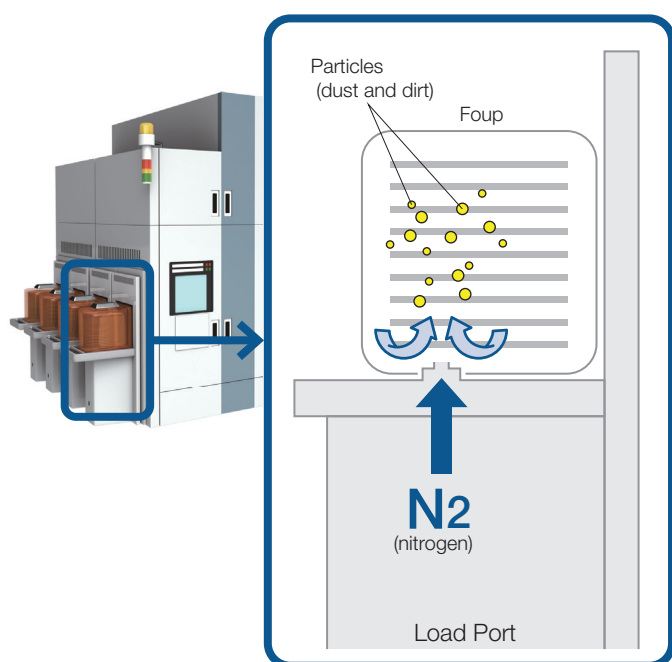


Product name	Process sensor Digital mass flow controller
Model No.	MQV_ _ _ _

Process and equipment name
Front-end processes, Load port

Current Situation

- Startup flow rate must be adjusted to prevent swirl of particles.
- When there is an equipment error, an engineer has to investigate the cause and then make a replacement/adjustment.
- Changing of flow rate control parameters and monitoring of flow rate are done through a host device.



Current Issues

Problem 1

It is hard to create a program in the host device to fine-tune the N₂ flow rate startup characteristics.

Problem 2

Not only pinpointing the cause of an error, but even detecting the error is difficult because neither alarms nor flow rate are displayed for the mass flow.

Problem 3

Changing the mass flow rate parameters and adjusting the flow rate can't proceed until the host device is debugged, etc.

Solution 1

Our mass flow controller can adjust the startup characteristics of the N₂ flow rate

With the SP ramp of MQV_____ models, you can specify the flow rate change rate per second.

Solution 2

Our mass flow controller's self-diagnostic function identifies and displays errors

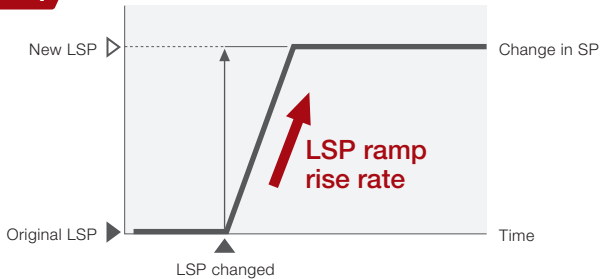
The self-diagnostic function aids locating investigation by identifying and displaying many different error states.

Solution 3

Parameters can be set without using any other device

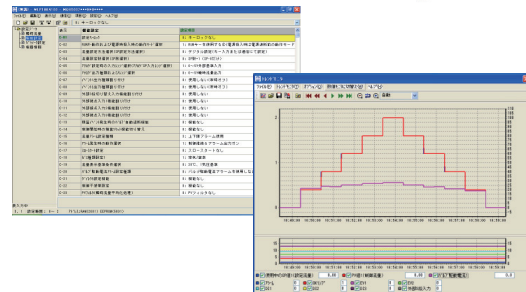
The mass flow controller allows you to set/specify parameters easily using the display and keys. In addition, the PC loader can be used to save parameters to a file and to monitor changes in the flow rate in real time while you make adjustments.

Solution 1



Solution 3

Easy connection to PC using dedicated USB communication cable (included with MLP100)



Solution 2



(Display/operation unit)

Related product



Network Instrumentation Module Smart Device Gateway* Model NX-SVG

Significantly reduces the work needed for a connection to a host device such as a PLC.

* A communication gateway that allows the interchange of information between various kinds of control device without programming, enabling smarter development work.

Please read "Terms and Conditions" from the following URL before ordering and use.
<https://www.azbil.com/products/factory/order.html>

Other product names, model numbers and company names may be trademarks of the respective company.

[Notice] Specifications are subject to change without notice.
No part of this publication may be reproduced or duplicated without the prior written permission of Azbil Corporation.

Azbil Corporation
Advanced Automation Company

1-12-2 Kawana, Fujisawa
Kanagawa 251-8522 Japan

URL: <https://www.azbil.com>