



Machine Tools

Smart instrumentation, lower cost

# Proximity sensors with 2 ON/OFF outputs make expensive instrumentation smarter!



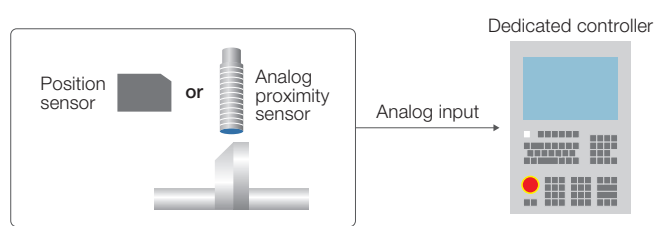
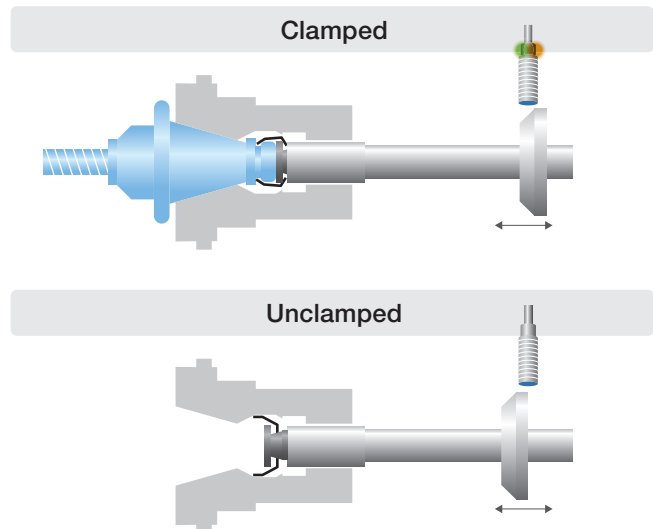
Proximity Switches

Product	Discrete sensor Adjustable Proximity Sensor
Model	H3C-H_

Process/ Equipment	Machining Center
-----------------------	------------------

## Current Situation

- The state of the tool clamp is detected by the position of the drawbar in the main spindle.
- Analog proximity and position sensors are used to identify the state.



## Current Problems

- Problem 1**

The analog input module needed to introduce a dedicated controller is very expensive.
- Problem 2**

Finding a place to install large sensors is difficult.
- Problem 3**

Since the thresholds must be set from the host system (dedicated controller), the software must be programmed first.

## Solution 1

### Remarkable 2-output 4-area proximity switch sensing

1 proximity sensor with 2 outputs does the work of multiple switches. An analog input module is not needed.

## Solution 2

### Proximity switches are the same size as general-purpose ones.

Since sensors are the regular size, the equipment takes up less space.

## Solution 3

### Easy setup with the Configuration Tool

The Tool makes it possible to monitor the safety margins for sensing. Auto-tuning sets the optimum threshold, helping to reduce problems on the line.

### Solution 1 Clamp positions and detection results

	Unclamped	Misclamped	Clamped	Clamped Empty
Output 1	OFF	ON	ON	OFF
Output 2	OFF	OFF	ON	ON

	Unclamped	Misclamped	Clamped	Clamped Empty
Output 1	OFF	ON	ON	OFF
Output 2	OFF	OFF	ON	ON

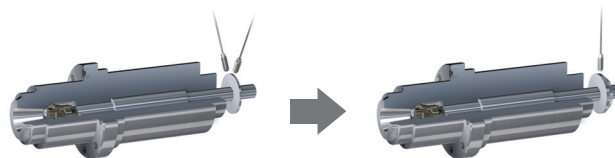
  

	Unclamped	Misclamped	Clamped	Clamped Empty
Output 1	OFF	ON	ON	OFF
Output 2	OFF	OFF	ON	ON

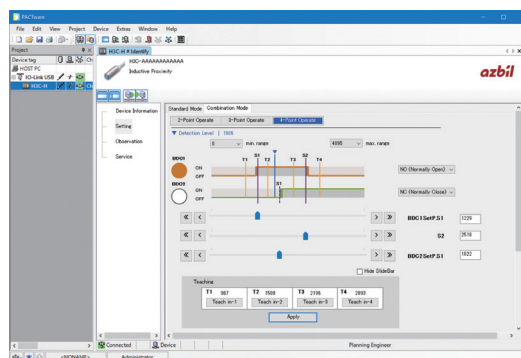
  

	Unclamped	Misclamped	Clamped	Clamped Empty
Output 1	OFF	ON	ON	OFF
Output 2	OFF	OFF	ON	ON

### Solution 2 Sample proximity switch installation



### Solution 3 Configuration Tool



Please read "Terms and Conditions" from the following URL before ordering and use.

<https://www.azbil.com/products/factory/order.html>

Other product names, model numbers and company names may be trademarks of the respective company.

[Notice] Specifications are subject to change without notice. No part of this publication may be reproduced or duplicated without the prior written permission of Azbil Corporation.

**Azbil Corporation**  
Advanced Automation Company

1-12-2 Kawana, Fujisawa  
Kanagawa 251-8522 Japan  
URL: <https://www.azbil.com>

1st Edition : Apr. 2021-SO