



Machining • Metalworking

Automatic tuning makes adjustment easy

# Sharply reduce the man-hours for program changes!



Proximity Switches

Product	Discrete sensor Adjustable Proximity Sensor
Model	H3C

Process/ Equipment	NC lathe
-----------------------	----------

## Current Situation

- Proximity switches are used to detect if the workpiece is clamped based on the position of the chuck cylinder dog.
- This requires two proximity switches.



## Current Problems

- Every time there is a different diameter workpiece, a tool change and repositioning of the proximity switch or dog is required.
- Tool changes take time (man-hours).

**Unclamped**

**Clamped**

**Clamped Empty**

	Unclamped	Clamped	Clamped Empty
Proximity switch 1	ON	OFF	OFF
Proximity switch 2	OFF	OFF	ON

## Solution 1

### Easy adjustment and man-hour reduction

Run auto-tuning in each state on one sensor to automatically change settings and thresholds.

## Solution 2

### Support for long stroke

Proximity sensor can handle a long clamp stroke, so a tapered dog can be used.

## Solution 3

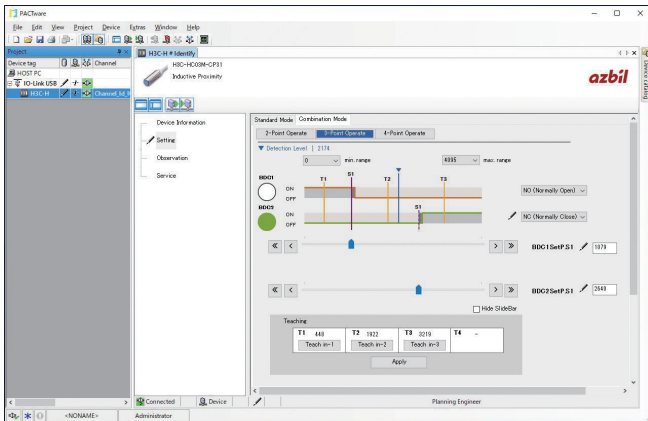
### Configuration Tool makes detection levels easily visible

A special Configuration Tool makes it possible to monitor safety margins for sensing, allowing you to always know the optimum threshold and make adjustments.

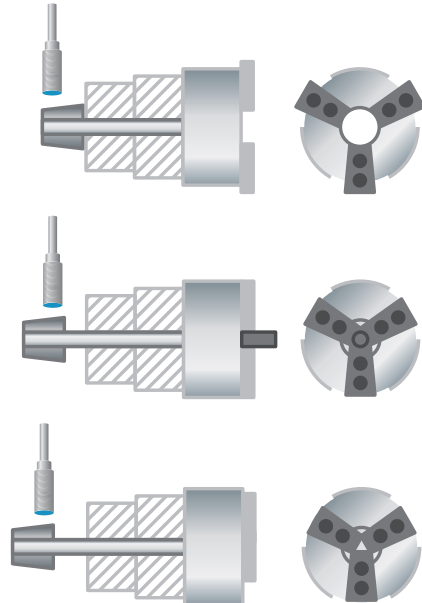
### Solution 1 Sample proximity switch installation



### Solution 3 Configuration Tool



### Solution 2 Support for long stroke



	Unclamped	Clamped	Clamped Empty
Output 1	ON	OFF	OFF
Output 2	OFF	OFF	ON

Please read "Terms and Conditions" from the following URL before ordering and use.

<https://www.azbil.com/products/factory/order.html>

Other product names, model numbers and company names may be trademarks of the respective company.

[Notice] Specifications are subject to change without notice.  
No part of this publication may be reproduced or duplicated without the prior written permission of Azbil Corporation.

**Azbil Corporation**  
Advanced Automation Company

1-12-2 Kawana, Fujisawa  
Kanagawa 251-8522 Japan

URL: <https://www.azbil.com>

1st Edition : Apr. 2021-SO