

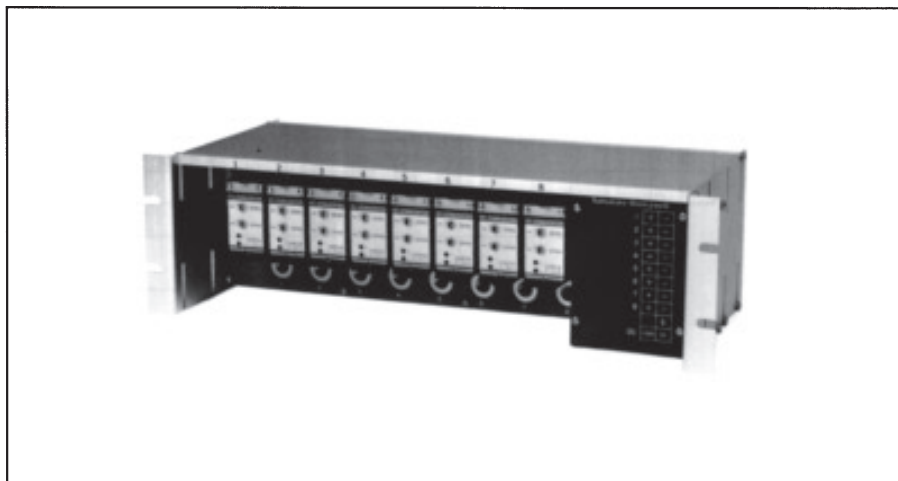
SystempaK

Multi-P/I Converter

Model KUX121/128

Introduction

Multi-P/I Converter (Model KUX 121) is a highly-packed high precision P/I converter with semiconductor sensors. It, with a multiple number of P/I converter modules, is ideal as a densely-packed computer interface for a pneumatic instrumentation system.



Standard Specifications

| Item | Specifications |
|------------------------------------|---|
| Input | 0.2 to 1.0 kgf/cm ² {20~98kPa}, 3 to 15 psi, 0.2 to 1.0 bar, 20 to 100 kPa (Pressure rating 2 kgf/cm ² {200kPa}) |
| Output | 4 to 20 mA DC (Current limit approx. 30 mA) 1 to 5 VDC (For common power supply type only) |
| Power Source | DC source (Individual or common): 24 V $\begin{matrix} +15\% \\ -10\% \end{matrix}$ AC source: 100, 110, 115, or 120 V $\pm 10\%$ 50 or 60 Hz ± 2 Hz |
| Power Consumption | DC source: 3.84 W (MAX.) AC source: 19.2 VA (MAX.) |
| External Load | DC source (Individual or common): 480 ohms or less Maximum allowable external load is calculated as: $R = (V - 14.4) / 0.02$ (where, R: External load (ohm) V: Supply voltage (volt)) AC source: 480 ohms or less, with rated voltage $\pm 10\%$ |
| Air Connections | Rc 1/4, 1/4NPT internal thread |
| Ambient Temperature | 0 to 50°C |
| Ambient Humidity | 10 to 90% RH |
| Accuracy | $\pm 0.25\%$ FS |
| Hysteresis | 0.10% FS or less |
| Temperature Characteristics | Zero shift: 0.6% FS/25°C (MAX.) Span shift: 0.6% FS/25°C (MAX.) |
| Zero Drift | 0.5% FS/6 months (MAX.) |
| Mounting | Wall mount or 19-inch rack mount (EIA, RS-310-B) |
| Weight | Individual DC source type: 3.9 kg (MAX.) Common DC source type: 4.3 kg (MAX.) AC source type: 5.1 kg (MAX.) |

Model Number Table

1) Multi-P/I Converter

| Basic Model No. | Selections | | | | | | | Options | Description | |
|-----------------|--------------|-------|--------|-----------------------|--------|----------|-------------|---------|--|--|
| | Power Source | Input | Output | Air Piping Connection | Module | Mounting | Environment | | | |
| KUX121 | | | | | | | | | Multi-P/I Converter | |
| | -1 | | | | | | | | Individual power source DC24V | |
| | -2 | | | | | | | | Common power source DC24V | |
| | -3 | | | | | | | | Common power source AC100V, 50/60Hz | |
| | -4 | | | | | | | | Common power source AC110V, 50/60Hz | |
| | -5 | | | | | | | | Common power source AC115V, 50/60Hz | |
| | -6 | | | | | | | | Common power source AC120V, 50/60Hz | |
| | | | 1 | | | | | | | 0.2 to 1.0kgf/cm ² 20~98kPa |
| | | | 2 | | | | | | | 3 to 15psi |
| | | | 3 | | | | | | | 0.2 to 1.0bar |
| | | | 4 | | | | | | | 20 to 100kPa |
| | | | 5 | | | | | | | 0 to 1.0kgf/cm ² 0~98kPa (Specific order) |
| | | | 6 | | | | | | | 3 to 27psi (Specific order) |
| | | | | 1 | | | | | | 4 to 20mA DC |
| | | | | 2 | | | | | | 1 to 5V DC (Selectable only for power supply specifications 2 - 6) |
| | | | | 3 | | | | | | 20 to 4mA DC (Specific order) |
| | | | | | A | | | | | Rc1/4 |
| | | | | | B | | | | | 1/4NPT internal thread |
| | | | | | | 0 | | | | File only |
| | | | | | | 1 | | | | File + 1 converter module |
| | | | | | | 2 | | | | File + 2 converter modules |
| | | | | | | 3 | | | | File + 3 converter modules |
| | | | | | | 4 | | | | File + 4 converter modules |
| | | | | | | 5 | | | | File + 5 converter modules |
| | | | | | | 6 | | | | File + 6 converter modules |
| | | | | | | 7 | | | | File + 7 converter modules |
| | | | | | | 8 | | | | File + 8 converter modules |
| | | | | | | | C | | | 19-inch rack mount |
| | | | | | | | S | | | Wall mount |
| | | | | | | | | X | | Standard |
| | | | | | | | | A | | For tropical service (Specific order) |
| | | | | | | | | B | | Corrosive atmosphere resistant (Specific order) |
| | | | | | | | | | -X | No options |
| | | | | | | | | -P | With input air pressure check terminal | |

2) Multi-P/I Converter Module

| Basic Model No. | Selections | | | | Options | Description |
|-----------------|--------------|-------|--------|-------------|---------|--|
| | Power Source | Input | Output | Environment | | |
| KUX128 | | | | | | Multi-P/I converter module |
| | | -1 | | | | DC24V |
| | | | 1 | | | 0.2 to 1.0kgf/cm ² 20~98kPa |
| | | | 2 | | | 3 to 15psi |
| | | | 3 | | | 0.2 to 1.0bar |
| | | | 4 | | | 20 to 100kPa |
| | | | 5 | | | 0 to 1.0kgf/cm ² 0~98kPa (Specific order) |
| | | | 6 | | | 3 to 27psi (Specific order) |
| | | | | 1 | | 4 to 20mA DC |
| | | | | 3 | | 20 to 4mA DC (Specific order) |
| | | | | | X | Standard |
| | | | | | A | For tropical service (Specific order) |
| | | | | | B | Corrosive atmosphere resistant (Specific order) |
| | | | | | | -X No options |

Notes: 1) When power source is AC, it is converted into 24 VDC power by the File.

2) For the 1 to 5 VDC output, the 4 to 20 mADC output is converted into 1 to 5VDC by the File.

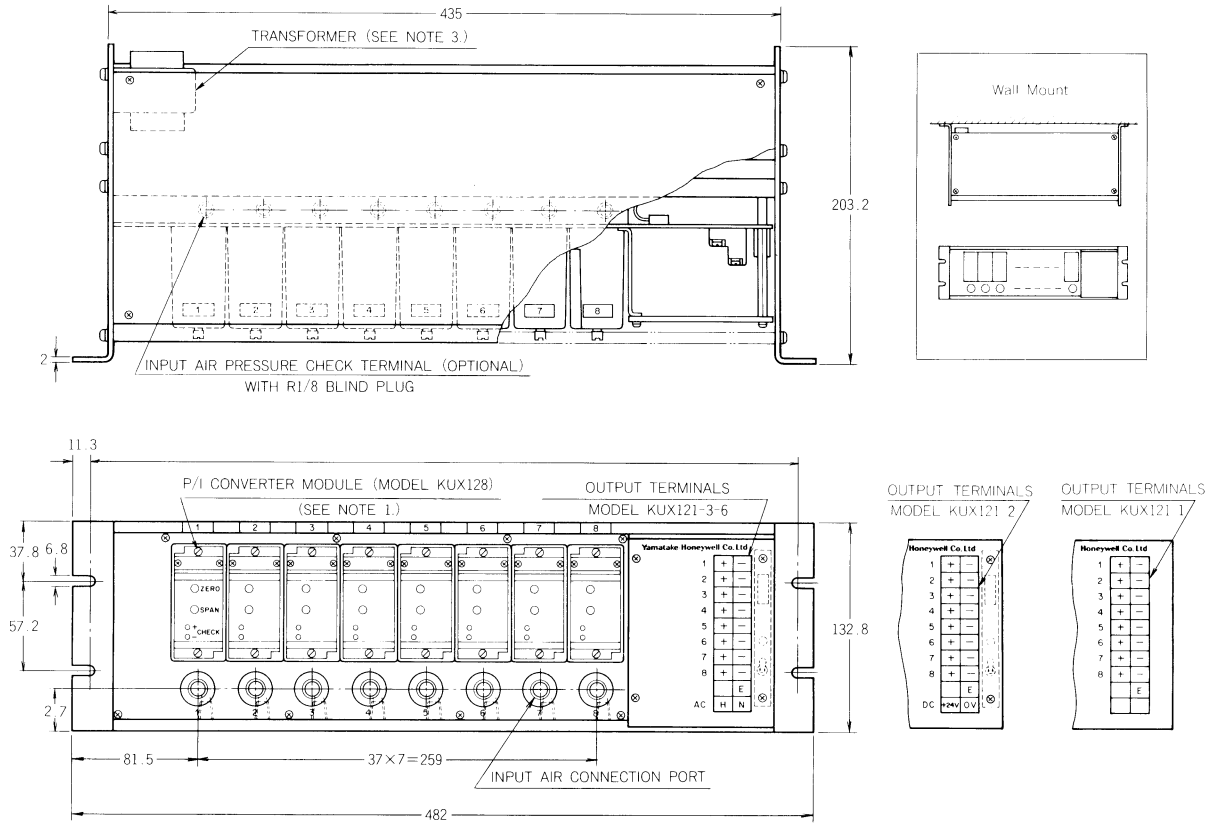
Dimensions and Connections

(Unit: mm)

1) Multi-P/I Converter (KUX121)

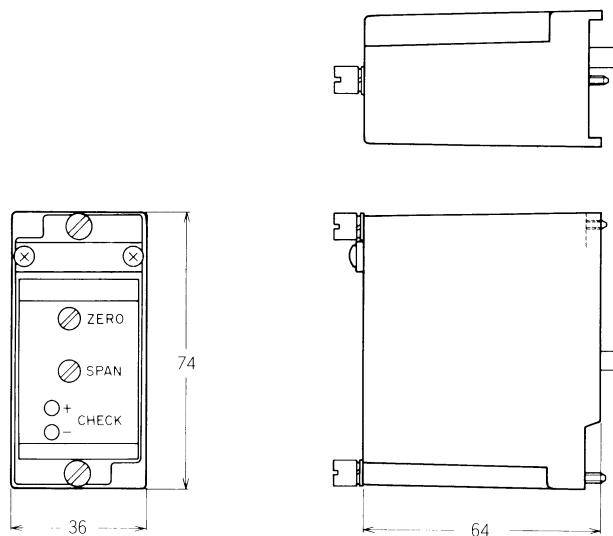
Rack-Mount Type (See Note 4.)

Wall-Mount Type (See Notes 2 and 4.)



- Notes:
- 1) A blind plate is supplied to cover the space where no converter modules are installed.
 - 2) The wall-mount type differs from the rack mount type only in that the mounting brackets for the chassis are located at the rear. Overall dimensions of both types of converters are identical.
 - 3) The transformer is provided only for the AC common type of Multi-P/I Converter.
 - 4) When two or more Multi-P/I Converters are installed vertically, provide a space of 200 mm or more between two adjoining converters.

2) Multi-P/I Converter Module (Model KUX128)



Please read the "Terms and Conditions" from the following URL before ordering or use:

<http://www.azbil.com/products/bi/order.html>

Specifications are subject to change without notice.

azbil

Azbil Corporation

Advanced Automation Company

1-12-2 Kawana, Fujisawa

Kanagawa 251-8522 Japan

URL: <http://www.azbil.com/>

(10)

4th Edition: July 2012

No part of this publication may be reproduced or duplicated without the prior written permission of Azbil Corporation.